



Children's Treatment Network

Building Brighter Futures Together



**Summer Camp Guide to Fun, Fitness, and Friends
in York Region & Simcoe County**





What's Inside

01. Things to consider when choosing a camp

02. Things to consider when preparing for camp

03. Things to consider when preparing for camp

04. Camp funding options

05. Municipal camps in York Region and Simcoe County

06. Private camps in York Region

07. Private camps in Simcoe County

08. Additional camps

The 6 F's of Child Development: Camp Guide Edition



Camp offers a unique opportunity for children and youth in your **FAMILY** to have **FUN**, make **FRIENDS**, get active outside (**FITNESS**), develop new skills (**FUNCTIONING**) and make memories that last a lifetime (**FUTURE**).

Choosing a Camp



Plan Early:

Many camps fill up quickly and have limited funding options

Think About Your Child/Youth's Interests:

Do they like sports, arts and crafts or science? Look for camps that offer that type of program. Are you looking for a day camp or overnight camp? This will help you narrow down your camp options.

Consider Your Child/Youth's Support Needs:

Do they prefer small groups? Do they require 1:1 support?

Connect With The Camp To Discuss Your Child/Youth's Needs:

The more information you share about your child/youth's specific needs, the better prepared the camp can be to support them. Some examples of information to share are:

- Sensory needs
- Augmentative communication devices
- Feeding and toileting needs
- Equipment

Things to consider when...



Preparing for Camp



Connect With The Camp:

Some camps may be able to have campers tour the facility before camp begins. If you think this would be valuable to your child/youth, contact the camp directly to see if it can be arranged.

Talk To Your Child/Youth:

Ask them how they are feeling about going to camp. Talk about their worries and what they are looking forward to. Show them pictures online or even drive by the camp so they can have a look themselves.

Consider How You Are Feeling:

If you are feeling anxious about your child going to camp, likely they will too. Connect with the camp to discuss your concerns or reach out to other parents in the community who have been down this road before. It's important to do whatever you think is valuable to ease your mind about sending your child/youth to camp.

Remember camp is about reducing stress and having **FUN!**



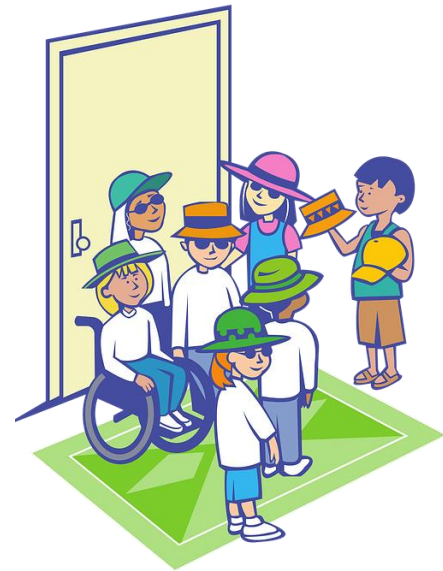
Going to Camp

Things you may need to teach the staff about:

- Physical equipment: walkers, wheelchairs, standers, etc...
- Feeding needs/special diet
- Augmentative communication devices: high and low tech
- Sensory needs and strategies
- Self-regulation strategies

Things your child/youth may need to bring to camp with them:

- Hat
- Water bottle
- Snacks/lunch
- Bathing suit/towel
- Change of clothes
- Sunscreen
- Backpack





Going to Camp

Please keep in mind that camp is NOT school. The counsellors and support staff are often students themselves and are doing their best to learn how to support a variety of campers with different needs.

Be patient and keep the lines of communication open. Be realistic in your expectations of not only the staff, but with your child/youth as well.

Realize that they may take awhile to settle in and get comfortable and that's okay!





Funding Options

Everyone deserves to go to camp and there are some funding opportunities in York Region and Simcoe County.

Visit the links below to see if your family is eligible.

- [Autism Ontario 1:1 Summer Support Worker Reimbursement](#)
- [Autism Ontario March Break Reimbursement Fund](#)
- [Ontario Camp Subsidy Listing](#)
- [York Region Recreation Subsidies](#)
- [Simcoe County Recreation Subsidies](#)



Camp Listings



The following information was provided by the camps and is meant to present families with a snapshot of what local camps are offering.

Contact the individual camps directly to get more information about your child's individualized needs.

In this Summer Camp Guide, the following terms are used:

Adapted Camps

Camps that have been modified specifically for campers with disabilities.

Inclusive Camps

Mainstream camps that welcome campers with and without disabilities.

Ratio

Ratios are written as staff : participant





Municipal Camps in Simcoe County



Simcoe Camps	Type	Ages	Weeks	Support Options	Additional Costs for 1:1 Support	Transportation	Before or After Care	Other
City of Barrie Jordan O'Dell 705-739-4220 x5789, Jordan.O'Dell@barrie.ca Click Here for Website	Adapted Camps Inclusive Camps	Preschool age (4-5 years) School-age (6-12 years) Youth (13+ years)	9 Weeks	1:1 Support available 1:3 Supportive Ratio for adapted camps	\$390 for 5 day week; \$312 for 4 day week; One week of 1:1 Support offered for free per participant	Not offered	Before Care After Care	One week of 1:1 support offered for free per participant - more information on website.
City of Bradford N'Diia Maharaj 905-775-7529 ext. 8301 NMaharaj@townofbwg.com Click Here for Website	Inclusive Camps	Preschool age (4-5 years) School-age (6-12 years) Youth (13+ years)	8 Weeks	1:1 Support available - subject to availability	No additional cost	Not offered	Before Care After Care	BWG Summer Camps is offered at 3 different locations for varying age groups. The camp day offers, games, crafts, songs and special guests. Each week will have a theme that is designed by the camp staff. Most camps are offered outdoors except for Quest Kinder, Quest JR and Quest SR that are located at the BWG Leisure Centre that gets to utilize the gymnasium and indoor space.
City of Orillia Megan Visser (705) 329-8027, mvisser@orillia.ca Click Here for Website	Inclusive Camps	Preschool age (4-5 years) School-age (6-12 years) Youth (13+ years)	9 Weeks	1:1 Support available	One free week of 1:1 Support offered. Additional cost of \$346.75-\$384.75	Not offered	Before Care After Care	Every inclusion camper's first week is free!
Town of Innisfil activeinnisfil@innisfil.ca 705-436-3710 Click Here for Website	Inclusive Camps	Preschool age (4-5 years) School-age (6-12 years)	9 Weeks	1:1 Support available	One free week of 1:1 Support offered. Additional cost of \$185 for second week.	Not offered	Not offered	Town of Innisfil camps provide an integrated and inclusive space for all participants. If your child requires assistance, we have inclusive counsellors available to offer support. The summer guide will be available in May. The Spring guide does include Camp information.
Town of Springwater Jeddy Wong 705 728 4784 ext 2053 jeddy.wong@springwater.ca Click Here for Website	Inclusive Camps	School-age (6-12 years)	9 Weeks	1:1 Support available	Additional Cost	Not offered	Not offered	We are currently looking to finalize our Inclusion offerings for this summer. Please reach out for more details if needed!
Town of Wasaga Joshua Pallas 705-429-3321 x2504 recreation@wasagabeach.com Click Here for Website	Inclusive Camps	Preschool age (4-5 years) School-age (6-12 years)	9 Weeks	1:1 Support available	No additional cost	Not offered	Before Care After Care	



Municipal Camps in York Region



York Camps	Type	Ages	Weeks	Support Options	Additional Costs for 1:1 Support	Transportation	Before or After Care	Other
City of Markham Bindi Patel 905-477-7000 bpatel@markham.ca Click Here for Website	Inclusive Camps	Preschool age (4-5 years) School-age (6-12 years) Youth (13+ years)	9 Weeks	1.1 Support available 1.2 Supportive ratio	Cost depends on the camp. All of our core camps are an inclusive price, which includes the camp fee and Support Staff.	Not offered	Before Care After Care	Our 1:1 Inclusion Support for camp fills up quickly. Please connect with Bindi Patel before May 13, 2022 if your child/youth requires this support.
City of Richmond Hill Jennifer Anderson 905-747-6369 jennifer.anderson@richmondhill.ca Click Here for Website	Adapted Camps Inclusive Camps	Preschool age (4-5 years) School-age (6-12 years) Youth (13+ years)	9 Weeks	1.1 Support available subject to availability	No additional cost	Not offered	Before Care After Care	The City of Richmond Hill provides a positive integrated camp experience for children with disabilities. We encourage families to contact us before registering to discuss support needs and camp options.
City of Vaughan Mihaela Neagoe 905-832-2377 ext. 7405 mihaela.neagoe@vaughan.ca Click Here for Website	Adapted Camps Inclusive Camps	Preschool age (4-5 years) School-age (6-12 years) Youth (13+ years)	9 Weeks	1.1 Support available 1.2 Ratio available	\$17.75/hour	Not offered	Before Care After Care	
Town of Aurora Chiara Walsh cwalsh@aurora.ca Click Here for Website	Adapted Camps Inclusive Camps	Preschool age (4-5 years) School-age (6-12 years) Youth (13+ years)	8 Weeks	1.1 Support available	No additional cost	Not offered	Not offered	1:1 support is offered on a first-come, first served basis and must be registered into with the codes provided in the guide. Registration opens on April 11 for residents and April 18 for non-residents.



York Camps	Type	Ages	Weeks	Support Options	Additional Costs for 1:1 Support	Transportation	Before or After Care	Other
Town of Georgina Jessica McLean jmmclean@georgina.ca Click Here for Website	Inclusive Camps	Preschool age (4-5 years) School-age (6-12 years)	9 Weeks	1:1 Support available	No additional cost	Both to and from camp	Not offered	For 1:1 Support Workers, we book the first 2 weeks for families and then provide accommodation in the remaining weeks if there is availability.
Town of Newmarket Pat McIntosh 905 953-5300 Ext 2821 pmcintosh@newmarket.ca ; inclusion@newmarket.ca Click Here for Website	Adapted Camps Inclusive Camps	Preschool age (4-5 years) School-age (6-12 years) Youth (13+ years)	8 Weeks	1:1 Support available 1:3 Supportive ratio & 1:5 Supportive ratio for adapted camps	No additional cost	Not offered	Before Care After Care	Families should contact us as soon as possible (prior to May 1) to proceed with camp requests for support, the number of weeks requested and prepare for camp selections.
Town of Whitchurch-Stouffville Ashley Arruda 905-642-7529 ext. 5268 ashley.arruda@townofws.ca Click Here for Website	Inclusive Camps	Preschool age (4-5 years) School-age (6-12 years) Youth (13+ years)	9 Weeks	1:1 Support Available	Additional Cost	Not offered	Before Care After Care	
Township of King Dori Wilner camps@king.ca Click Here for Website	Inclusive Camps	Preschool age (4-5 years) School-age (6-12 years) Youth (13+ years)	9 Weeks	1:1 Support available	No additional cost	Not offered	Not offered	



Private Camps in Simcoe County



Simcoe Camps	Disability	Type	Ages	Weeks	Support Options	Additional Costs for 1:1 Support	Transportation	Before or After Care	Other
Creative Cafe Art Camp (Barrie) Lynne Butler 705-797-1345 lynne@creativecafe.ca Click Here For Website		Inclusive Camps	School-age (6-12 years) Youth (13+ years)	8 Weeks	1:6 Small Group Ratio	No additional cost	Not offered	Not offered	Our mixed media art camp is amazing art therapy. We play with many mediums throughout the week including the pottery wheel, clay sculptures, glass fusion, canvas painting, mosaics, candle making and mixed media projects. Our staff are loving and make art fun for all ages and abilities.
Kerrys Place Autism Services-Summer Camp 1-833-775-3775 intake@kerrysplace.org Click Here for Website	Autism Spectrum Disorder	Virtual Camps Specifically for Disabilities	School-age (6-12 years) Youth (13+ years)	8 Weeks	Not offered	No additional cost	Not offered	Not offered	Each week of camp has a theme or topic such as technology, sports and teamwork, performing arts, science, animals and more! Please check our website for more details. If a family is unsure that camp would be a good fit due to 1:1 support needs, we encourage them to reach out to us for additional information.
Lyndsey Stevenato Children's Therapy Services Camp (Barrie) Becky Robinson 705-792-5272 info@childrenstherapy.ca Click Here for Website	ADD/ADHD, Autism Spectrum Disorder, Behavioural/Emotional Needs, Learning Disabilities, Developmental Disabilities	Inclusive Camps	Preschool age (4-5 years) School-age (6-12 years)	5 Weeks	Volunteer Assistance	No additional cost	Not offered	Not offered	Our mission is to transform the lives of children. We believe that every child has the ability to grow, learn and succeed. This belief is integrated into our services and day camp program.
Science North Summer Camps (Barrie) Tina Leduc leduc@sciencenorth.ca Click Here for Website		Inclusive Camps	School-age (6-12 years)	1 week	Not offered	No additional cost	Not offered	Before Care After Care	
Wye Marsh Summer Day Camp (Midland) Kim Hacker (705) 526-7809 x201 khacker@wyemarsh.com Click Here For Website		Inclusive Camps	Preschool age (4-5 years) School-age (6-12 years)	8 Weeks	Not offered	Camper would have to provide their own Support Worker.	Not offered	After Camp	



Private Camps in York Region



York Camps	Disability	Type	Ages	Weeks	Support Options	Additional Costs for 1:1 Support	Transportation	Before or After Care	Other
Autism Ontario Laura Webb laura.w@autismontario.com Click Here for Website	Autism Spectrum Disorder	Inclusive Camps Virtual Camps Specifically for Disabilities	Preschool (4-5 years) School-age (6-12 years) Youth (13+)	7 Weeks	1:1 Support available 1:2 supportive ratio (Summer Social Skills Institute)	No additional cost	Not offered	Not offered	Registration closes on March 25 at 5 P.M. We can add your child/youth to the waitlist at a later time, but there is no guarantee that space will be available. Please visit the camp website for details about the different camps offered.
Camp Robin Hood 416-736-4443 sari@camprobinhood.ca Click Here for Website	ADD/ADHD, Autism Spectrum Disorder, Behavioural/Emotional Needs, Blind or Partially Sighted, Deaf/Hard-of-Hearing, Developmental Disabilities, Genetic Disorders, Learning Disabilities, Mental Health Diagnosis, Physical Disabilities, Tourette Syndrome	Inclusive Camps	Preschool (4-5 years) School-age (6-12 years)	8 Weeks	1:1 Support available Family can arrange to have their own Support Staff who would be paid directly by the family.	\$1000 each 2 week session	Both to and from camp	Not offered	
Community Living York South Markham: Sadia Shaukat 905-884-9110 Ext. 640 sshaikat@communitylivingyorksouth.ca Richmond Hill: Winny Ho 905-884-9110 Ext. 382 who@communitylivingyorksouth.ca Vaughan: Crystie Lau 905-884-9110 Ext. 267 clau@communitylivingyorksouth.ca Stouffville: Athavi Kugathasan 905-884-9110 Ext. 703 akugathasan@communitylivingyorksouth.ca Click Here for Website	Autism Spectrum Disorder, Intellectual Abilities, Down Syndrome, Developmental Disabilities	Inclusive Camp Virtual Camp Specifically for Disabilities	Youth (13+ years)	7 Weeks	1:3+ Supportive Ratio 1:1 Support Worker provided by caregivers	No additional cost	Not offered	Before Care After Care	Community Living York/South offers Summer Day Camp for youth between the ages of 14 to 17 and adults ages 18+. If families/caregivers require support with finding a 1:1 Support Worker, we are able to provide them with resources.



York Camps	Disability	Type	Ages	Weeks	Support Options	Additional Costs for 1:1 Support	Transportation	Before or After Care	Other
Kerry's Place Autism Services-Summer Camp 1-833-775-3779 intake@kerrysplace.org Click Here for Website	Autism Spectrum Disorder	Virtual Camp Specifically for Disabilities	School-age (6-12 years) Youth (13+ years)	8 Weeks	Not offered	No additional cost	Not offered	Not offered	Each week of camp has a theme or topic such as technology, sports and teamwork, performing arts, science, animals and more! Please check our website for more details. If a family is unsure that camp would be a good fit due to 1:1 support needs, we encourage them to reach out to us for additional information.
Kettleby Valley Camp info@kettlebyvalley.com Click Here for Website	ADD/ADHD Autism Spectrum Disorder	Inclusive Camps	Preschool (4-5 years) School-age (6-12 years)	8 Weeks	1:1 Support available	\$100/week per camper	Both to and from camp	Before Care After Care	Please contact the camp prior to applying to check for availability.
Learning Disabilities Association of YR Banke Oluwaleimu 905-884-7933 ext. 5 banke.leimu@ldayr.org Click Here for Website	ADD/ADHD Learning Disabilities	Inclusive Camps Specifically for Disabilities	School-age (6-12 years)	4 Weeks	Not offered	Additional Cost	Not offered	Before Care After Care	LDAYR Summer Camp 2022 will run from mid July to mid- August.
Shadow Lake Centre shadowlake.office@cltoronto.ca Click Here for Website	Autism Spectrum Disorder Developmental Disabilities	Overnight Camps Specifically for Disabilities	School-age (6-12 years) Youth (13+ years)	9 Weeks	1:1 Support available 1:2, 1:3, 1:4, 1:5 Supportive Ratios	Can sign up for camp based on support ratio, so all supported spaces are at different costs. All available to review on mycommunityhub.ca	Not offered	Not offered	We offer camps to individuals 7+. We have options available for adults with developmental disabilities as well.



Additional Camps Outside of York Region and Simcoe County



Camp	Disability	Type	Ages	Weeks	Support Options	Additional Costs for 1:1 Support	Transportation	Before or After Care	Other
Belwood Lodge and Camp (Belwood Lake) Trudi Hagerman 519-843-1211 info@belwoodlodgeandcamp.com Click Here for Website	ADD/ADHD, Autism Spectrum Disorder, Developmental Disabilities, Genetic Disorders, Learning Disabilities, Intellectual Disabilities	Overnight Camp Specifically for Disabilities	School-age (6-12 years) Youth (13+ years)	9 Weeks	1:3 Supportive Ratio	No additional cost	Not offered	Not offered	Our summer camp supports children, youth, and adults. The unique thing about Belwood Lodge and Camp is that as people age, they are able to continue coming to the same camp. Our campers create life long friendships that they are able to grow year after year.
Camp Awakening (Minden, Tichborne, Bancroft, ON) Emily Langer (416) 487-8400 info@campawakening.com Click Here for Website	Physical Disabilities	Overnight Camp Specifically for Disabilities	School-age (6-12 years) Youth (13+ years)	7 Weeks	1:2 Supportive Ratio	No additional cost	Both to and from camp	Not offered	Camp Awakening offers overnight summer camp, leadership and young adult programs that give children, teens and youth aged 8-29 with physical disabilities the opportunity to increase independence, make lasting friendships and accomplish things they never thought possible.
Camp Concord (Schomberg) Melissa May 647-746-6339 Click Here for Website	ADD/ADHD, Autism Spectrum Disorder, Developmental Disabilities, Learning Disabilities, Mental Health Diagnosis	Overnight Camp Specifically for Disabilities	School-age (6-12 years) Youth (13+ years)	4 Weeks	1:3 Supportive Ratio	Additional Cost	To camp	Not offered	
Camp Kennebec (Arden, Ontario) Donna Segal 613-335-2114 info@campkennebec.com Click Here for Website	ADD/ADHD, Autism Spectrum Disorder, Developmental Disabilities, Learning Disabilities, Mental Health Diagnosis, Tourette Syndrome, Down Syndrome, Intellectual Disabilities	Overnight Camp Specifically for Disabilities	School-age (6-12 years) Youth (13+ years)	8 Weeks	1:2 Supportive Ratio	No additional cost	Not offered	Not offered	All campers and staff are required to have their full COVID vaccines in order to attend camp.



Camp	Disability	Type	Ages	Weeks	Support Options	Additional Costs for 1:1 Support	Transportation	Before or After Care	Other
Camp Kodiak (McKellar, Ontario) Ilana Stoch 905-569-7595 info@campkodiak.com Click Here for Website	ADD/ADHD, Learning Disabilities, Tourette Syndrome, High-Functioning Autism Spectrum Disorder	Overnight Camp Specifically for Disabilities	School-age (6-12 years) Youth (13+ years)	7 Weeks	1:3 Supportive Ratio (campers must be able to manage all of their personal care and daily living skills independently.)	No additional cost	Both to and from camp	Not offered	Camp Kodiak is an overnight summer camp for children and teens with and without learning disabilities, ADHD, and high-functioning ASD. We offer an academic program, social skills programming and over 50 activities. We have 1-week sessions for 6-8 year old campers, and 3-, 4- and 7-week sessions for campers up to 18 years old. We will be hosting family camp retreats (3.5 days or 7 days) at the end of our regular camp program.
CNIB Lake Joe (Parry Sound - Muskoka) 705-375-2630 lakejoe@cnib.ca Click Here for Website	Blind or Partially Sighted Deafblind	Virtual Camp Overnight Camp Specifically for Disabilities	School-age (6-12 years) Youth (13+ years)	9 Weeks	Not offered	No additional cost	To camp	Not offered	CNIB Lake Joe offers youth weeks, family weeks and adult weeks (19+).
Easter Seals Camp Merrywood and Camp Woodeden (Perth, ON and London, ON) camp@easterseals.org Click Here for Website	Physical Disabilities	Overnight Camp Specifically for Disabilities	School-age (6-12 years) Youth (13+ years)	7 Weeks	2:1 Supportive Ratio Family can arrange to have their own support staff then that person would be paid directly by the family	No additional cost	Not offered	Not offered	Campers must be registered as Easter Seals clients in order to attend camp. The cost of camp is subsidized for most campers between the age of 6 and 19. We offer camp programs for campers up to the age of 36.
Fraser Lake Camp (Hastings County) Melissa Parkhurst Melissa@fraserlakecamp.com Click Here for Website	ADD/ADHD, Autism Spectrum Disorder, Behavioural/Emotional Needs, Developmental Disabilities, Learning Disabilities, Mental Health Diagnosis	Inclusive Camp	School-age (6-12 years) Youth (13+ years)	7 Weeks	1:1 Support available	Additional Cost	Both to and from camp	Not offered	Overnight camp situated in Bancroft ON.



Camp	Disability	Type	Ages	Weeks	Support Options	Additional Costs for 1:1 Support	Transportation	Before or After Care	Other
InterVarsity Pioneer Camp Ontario (Port Sydney, Muskoka) Edmund Guest eguest@pioneerocamp.ca Click Here for Website	ADHD, Autism Spectrum Disorder, Behavioural/Emotional Needs, Developmental Disabilities, Genetic Disorders, Learning Disabilities, Mental Health Diagnosis, Physical Disabilities, Tourette Syndrome	Inclusive Camp Overnight Camp	School-age (6-12 years) Youth (13+ years)	2 Weeks	1:1 Support available	\$1620/week	Both to and from camp	Not offered	We are a Christian camp, with accommodations that are a hybrid between tents and cabins. We have an application process to register for our Special Needs Program, but are not always able to accept campers if the resources are not available to meet their needs. That said, we try our best to make our camp accessible for a variety of
Kinark Outdoor Center (Minden, ON, Haliburton County) Jane Isbister 705-954-0603 Click here for Website	Autism Spectrum Disorder, Behavioural/Emotional Needs, Developmental Disabilities, Learning Disabilities, Mental Health Diagnosis	Virtual Camp Overnight Camp Specifically for Disabilities	Preschool age (4-5 years) School-age (6-12 years) Youth (13+ years)	1 Week	1:1 Support available 1:2 Supportive Ratio	No additional cost	Not offered	Not offered	We offer excellent Family Camp programs through the summer and year-round respite opportunities for families.
Mountainside Camp - Adaptive (Grey County) 705-445-0231 adaptive@bluemountain.ca Click Here for Website	ADHD, Autism Spectrum Disorder, Behavioural/Emotional Needs, Blind or Partially Sighted, Deaf/Hard-of-Hearing, Deafblind, Developmental Disabilities, Genetic Disorders, Learning Disabilities, Mental Health Diagnosis, Physical Disabilities, Tourette Syndrome	Inclusive Camp Specifically for Disabilities	School-age (6-12 years) Youth (13+ years)	2 Weeks	1:2 Supportive Ratio 1:1 Support subject to availability Campers may bring their own 1:1 Support Worker	No additional cost	Not offered	Not offered	Come and join in on the fun of camp with the support that you may need. Anyone is welcome, let's work together to provide great experiences for your young one. Let us know how we can support you (in advance of course) and we will help you achieve your goals. The first two weeks of August are available (weeks of August 1st & 8th). Blue Mountain is for everyone!



Camp	Disability	Type	Ages	Weeks	Support Options	Additional Costs for 1:1 Support	Transportation	Before or After Care	Other
Oakwood Camp (Mississauga) Jessica Difonzo jdifonzo@oakwoodacademy.ca Click Here for Website	ADD/ADHD, Autism Spectrum Disorder, Behavioural/Emotional Needs, Blind or Partially Sighted, Developmental Disabilities, Learning Disabilities, Physical Disabilities, Tourette Syndrome	Inclusive Camp Specifically for Disabilities	Preschool age (4-5 years) School-age (6-12 years) Youth (13+ years)	6 weeks	1:1 Support available 1:3 Supportive Ratio (Social Skills Club)	Additional Cost	Not offered	Before Care After Care	Oakwood Academy offers a unique social skills camp for all campers ages 3-18 years old. A camp theme will be integrated into structured learning and social interactions, which aims to build on the individual goals of each camper in order to create new learning opportunities.
Spiral Garden - Holland Bloorview (Toronto) musicandart@hollandbloorview.ca Click Here for Website	ADD/ADHD, Autism Spectrum Disorder, Behavioural/Emotional Needs, Blind or Partially Sighted, Deaf/Hard-of-Hearing, Deafblind, Developmental Disabilities, Genetic Disorders, Learning Disabilities, Mental Health Diagnosis, Physical Disabilities, Tourette Syndrome	Inclusive Camp Specifically for Disabilities	School-age (6-12 years) Youth (13+ years)	8 Weeks	1:1 Support available Sometimes families are offered a spot in which they provide their own 1:1 Support. In this case, the families would have to cover the cost of their provided support.	No additional cost	Not offered	Not offered	This is an integrated camp for those with and without special needs. For those requiring 1:1 support, spots are likely full now for the summer and would be allocated to a waitlist.



Additional Camps

Click the camp names to be redirected to the associated website.
*Camps in **red** are specifically designed for campers with disabilities.*

Simcoe County

- [Camp Couchiching](#)
- [Cairn Family of Camps](#)
- [WoodWind South Camp](#)

- [New Tecumseth Summer Camps](#)
- [Tay Township Camps](#)
- [Tiny Township Camps](#)

York Region

- [Adventure Camp](#)
- [Camp Green Acres](#)
- [Centre Camp](#)
- [Karma Country Camp](#)
- [Kayla's Children Centre](#)

Non-Simcoe and Non-York



- [Camp Kawartha](#)
- [Camp Kirk](#)
- [Camp Quality](#)
- [Camp Walden](#)
- [Camp Winston](#)
- [Hidden Bay Leadership Camp](#)

- [Kids Can Centre](#)
- [Variety Village](#)
- [YMCA](#)
- [YMCA of Simcoe Muskoka: Camp Kitchekewana](#)



Don't forget the most important part of camp is to have FUN!



CONNECT WITH US

www.ctnsy.ca

@CTNKids



13175 Yonge Street, Richmond Hill, Ontario L4E 0G6

Email: info@ctnsy.ca | Toll Free: 1-877-719-4795

York Region Local: 905-773-4779 | Simcoe County Local: 705-719-4795

Building Brighter Futures Together